

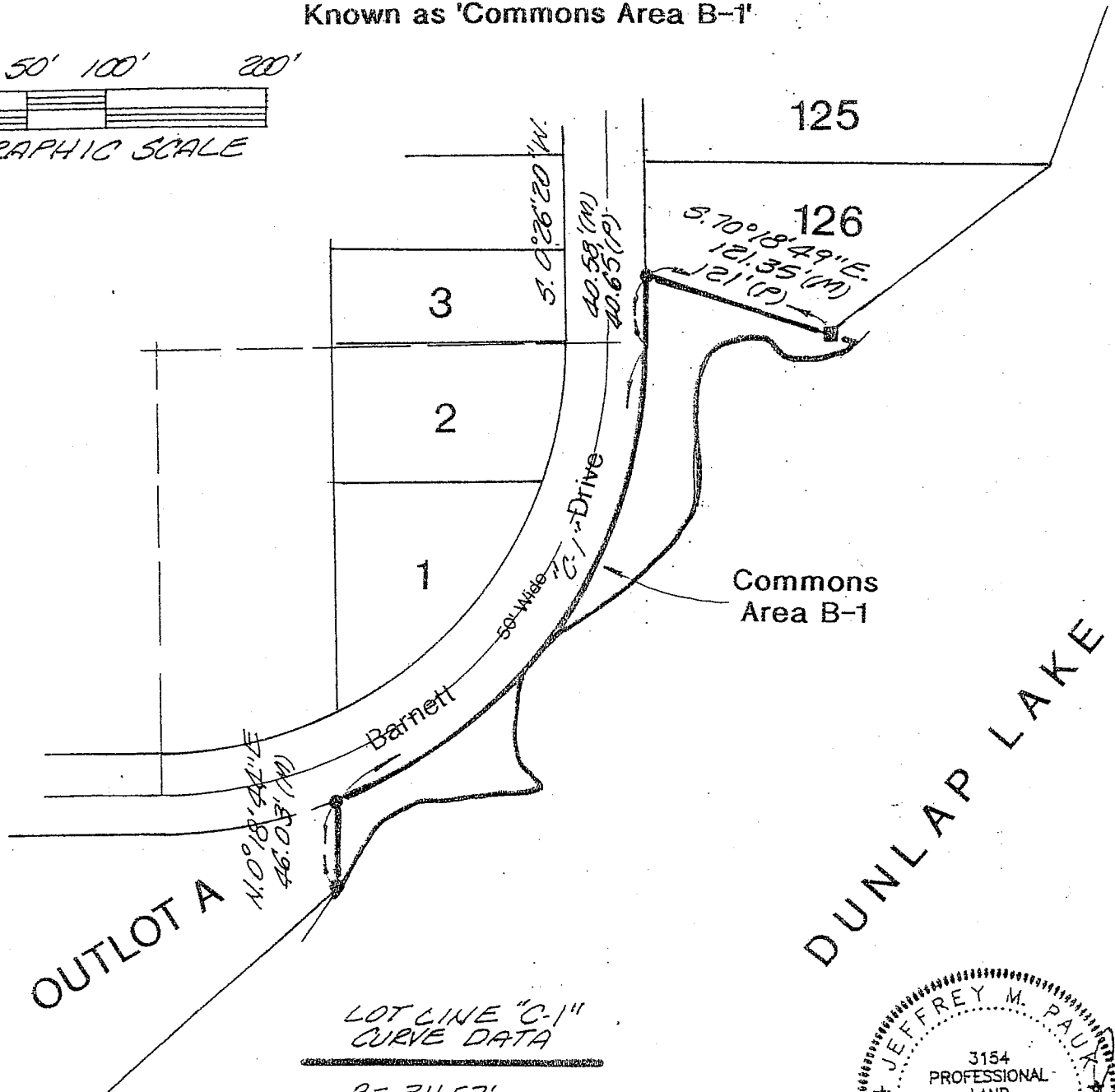
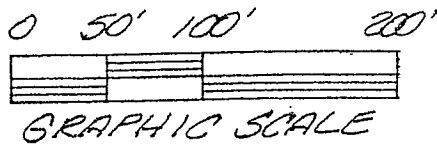
# Part of "Block G" of "Dunlap Lake Subdivision"

(As recorded in P.Bk.21/P.86)

in the N.E.1/4 of Sec.13-Twp.4 N.-R.8 W. of the 3rd P.M.,

Madison County, IL

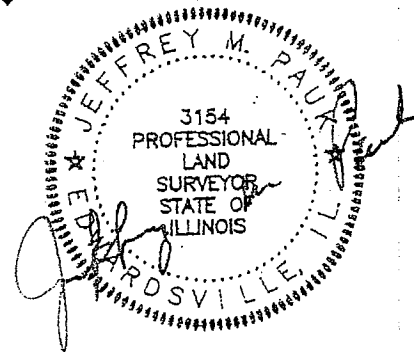
Known as 'Commons Area B-1'



LOT LINE "C-1"  
CURVE DATA

$R = 311.57'$   
 $A = 375.27'$   
 $C = 352.99'$   
 $C.BRG = S. 34^{\circ} 56' 36'' W.$

BASIS OF BEARINGS: Grid North, Illinois State Plane Coordinate System, West Zone, from astronomic observation



Madison County Surveyors

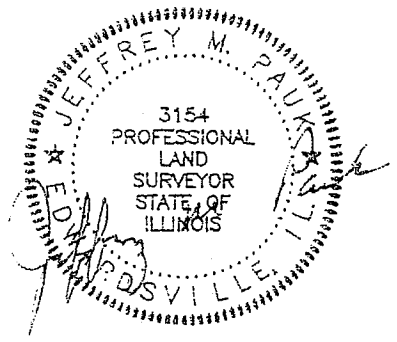
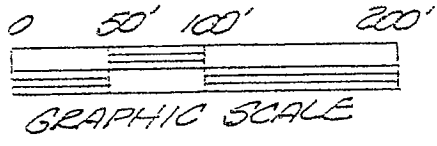
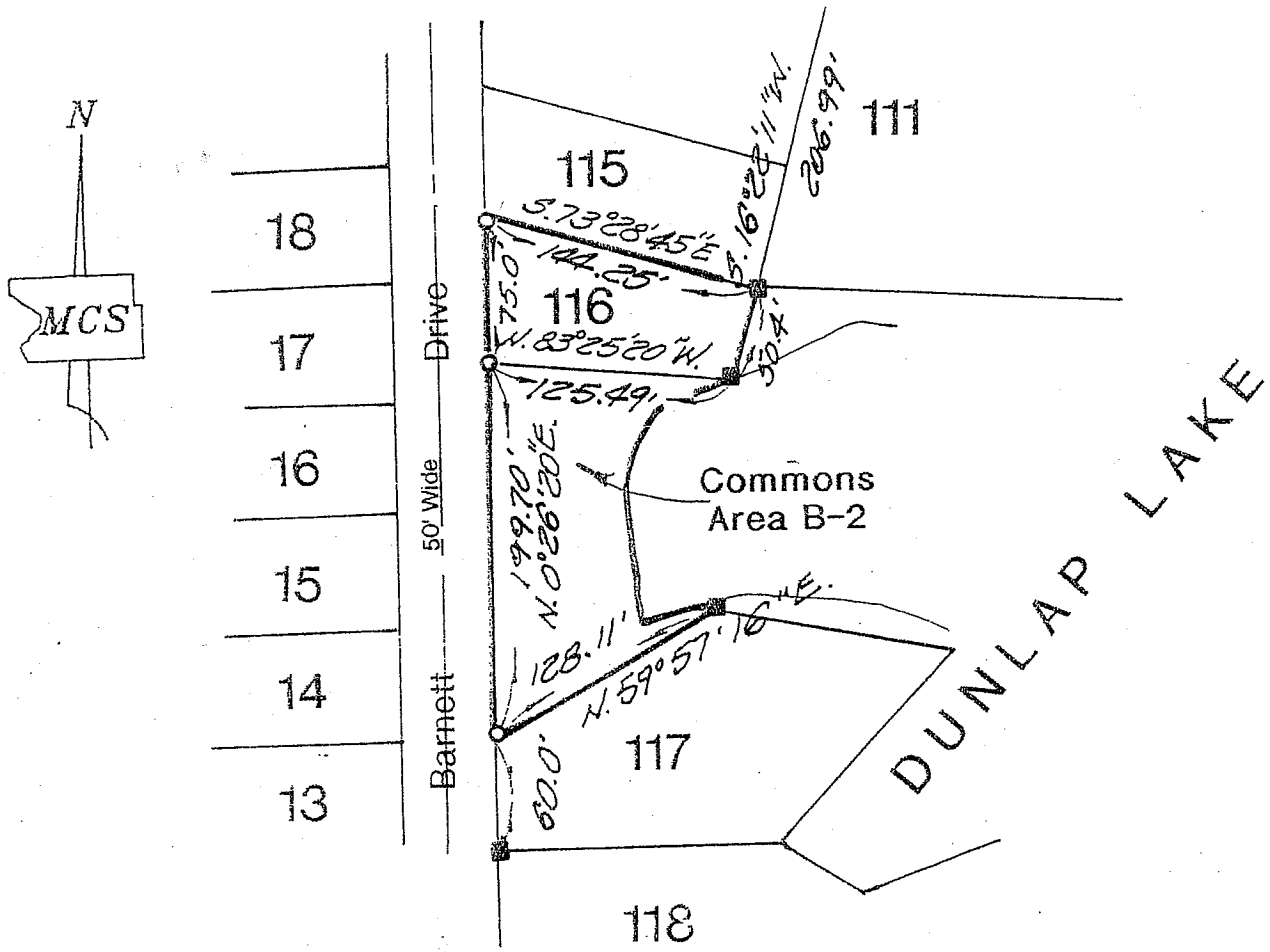
140A North Main Street  
 Edwardsville, IL 62025  
 (618) 692-4414  
 Fax (618) 692-4404

EXHIBIT "A"

Dunlap Lake Property Owners Association  
 1409 Gerber Road  
 Edwardsville, IL 62025

DN. BY JMW  
 CK BY JMP  
 JOB NO.  
 02148

Lot 116 and Part of Block "G" of "Dunlap Lake Subdivision",  
 (As recorded in P.Bk.21/P.86)  
 in the N.E.1/4 of Sec.13-Twp.4 N.-R.8 W.of the 3rd P.M.,  
 Madison County, IL  
 Known as 'Commons Area B-2'



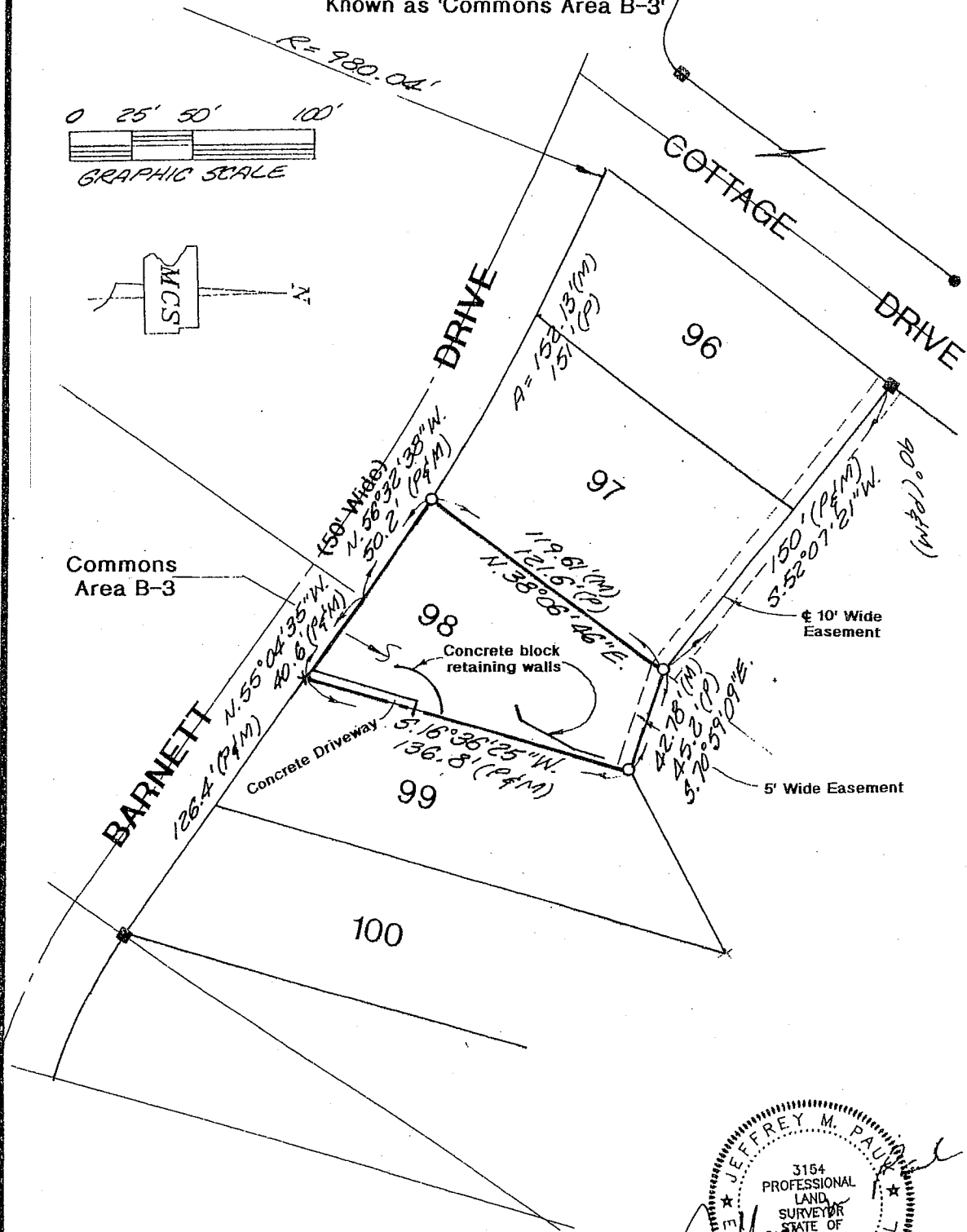
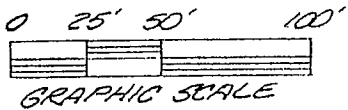
BASIS OF BEARINGS: Grid North, Illinois State Plane  
 Coordinate System, West Zone, from astronomic observation

Madison County Surveyors  
 140A North Main Street  
 Edwardsville, IL 62025  
 (618) 692-4414  
 Fax (618) 692-4404

**EXHIBIT "A"**  
 Dunlap Lake Property Owners Association  
 1409 Gerber Road  
 Edwardsville, IL 62025

DR. BY: JWK  
 CK. BY: JMP  
 02148

Part of "Block G" of "Dunlap Lake Subdivision"  
 (As recorded in P.Bk.21/P.86)  
 in the S.E.1/4 of Sec.12-Twp.4 N.-R.8 W. of the 3rd P.M.,  
 Madison County, IL  
 Known as 'Commons Area B-3'



JEFFREY M. PAUK  
 3154  
 PROFESSIONAL  
 LAND  
 SURVEYOR  
 STATE OF  
 ILLINOIS  
 EDWARDSVILLE, IL

**Madison County Surveyors**  
 140A North Main Street  
 Edwardsville, IL 62025  
 (618) 692-4414  
 Fax (618) 692-4404

**EXHIBIT "A"**

Dunlap Lake Property  
 Owners Association  
 1409 Gerber Road  
 Edwardsville, IL 62025

DN BY: JKW  
 CK BY: JMP  
 JOB NO.  
 02037

