



DUNLAP LAKE
Port of Edwardsville, Illinois
Slow Boatin' Since 1939

DLPOA New Resident's Meeting

12 September 2018

Brief History Of Dunlap Lake

- **1936, 1938: Land Purchased By Orie & Clara Dunlap**
- **1939: Dam Constructed**
- **1940: Road Construction Began**
- **1946: Subdivision Filed With County**
 - 252 lots on 15 miles of lakefront, 274 off-lake lots
- **1950: Dunlap Lake Property Owners Association (DLPOA) Formed**
- **1952: DLPOA Incorporated As A Non-Profit**
- **1977: Annexed By City Of Edwardsville For Sewers**
- **1977: Incorporation Amended, DLPOA Legally Responsible For:**
 - Care for the lake and common areas, improve fishing, promote safety regulations
 - Promote social activities among property owners
 - Assist in enforcement of State & Municipal public health laws
- **1992: Silt Filling The Lake Was Dredged Out**
- **2009: Created A Silt Basin To Catch Silt (Now Full!)**

Dunlap Lake Board



■ Board Structure

- Comprised of 15 elected DLPOA Residents volunteers
- Elections occur at each annual DLPOA Meeting in February
- Each elected term is for 3 years; terms are staggered to ensure continuity
- The Board further elects a President, Vice President, Secretary and Treasurer
- Most committees are chaired/staffed by Board members (volunteer basis)
- **NOTE:** Board meetings are open to Residents (typically last Monday of month)

■ Committee Responsibilities (With Chairperson)

- Building ([Andy Leek](#)): Maintain applicable records, reviews building plans, issues permits, makes recommendations to the Board regarding variance requests.
- Common Areas ([Lee Frea](#)): Upkeep of common areas including grass cutting, tree trimming/removal and shoreline protection. Also determines the location and issues permits for docks on common areas.
- Communications ([Tim Brown](#)): Work with other committees to document key messages and organize their storage for easy future reference by Residents.
- Dam Maintenance ([Mike Watts](#)): Monitors and maintains the dam including mowing, riprap, dam integrity, exercising the gate, working with the Corps of Engineers, permitting and dropping the lake on 5-year intervals.

Maintaining A Lake Takes A LOT Of Effort!

Dunlap Lake Board, Continued

■ Committee Responsibilities (With Chairperson)

- Finance ([Rick Welle](#)): Oversees the finances of the DLPOA.
- Fireworks ([Mike Watts](#)): Coordinates purchasing and execution of annual fireworks.
- Fish & Wildlife ([Jim Taylor](#)): Monitors the fish population (purchasing, stocking, etc). Traps damaging animals (beavers, muskrats, etc). Coordinates Kid's Fishing Derby.
- Legal ([Al Ortvals](#)): Works with our attorney on law suits and other legal matters.
- Meetings, Elections & Social ([Genie Manterfield](#)): Manages logistics for, and facilitation during, Board meetings, Annual meetings, social events (Holiday Social) and ballots/votes.
- Restrictions ([Roy Wehling](#)): Enforces restrictions and maintains applicable records.
- Safety ([Eric Ham](#)): Manages lake access (boat stickers, records) via the Barnett boat ramp. Enforces boat boat/motor sizes, numbers, etc. Conducts fish/water testing.
- Silt & Erosion ([Craig Louer](#)): Formulates/Executes plans for silt removal from lake.
- Web Page ([Todd Smith](#)): Maintains DLPOA website and Facebook pages.

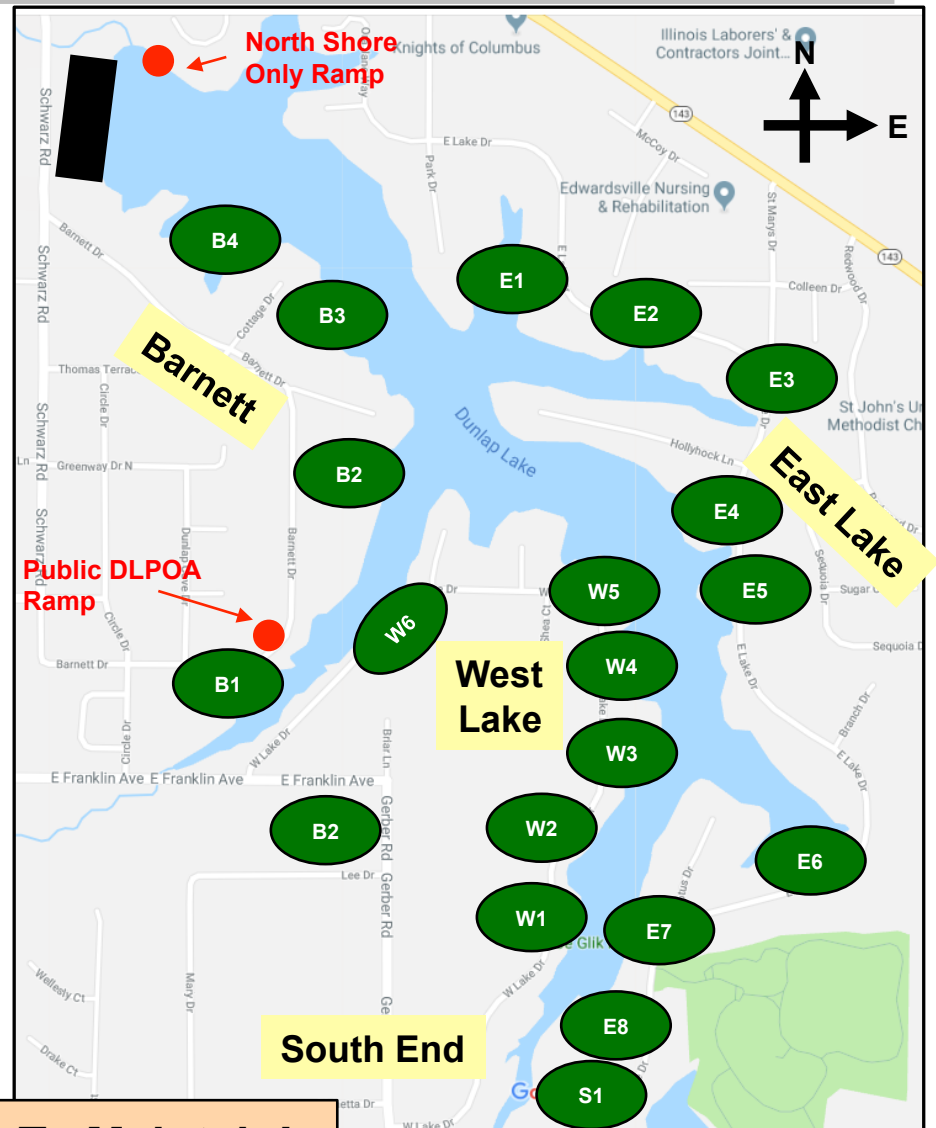
■ Current Major Projects (Details In Later Slides)

- Lake Health ("Dredging")
- Common Area Improvements
- Preparations For Spillway Work

Maintaining A Lake Takes A LOT Of Effort!

Committee Snapshot: Common Areas

- **19 Total Common Areas**
- **Lake Access**
 - Boat ramps, dock availability
- **Current Projects**
 - Kayak stands, picnic tables
 - Docks / Marina



There's A Lot To Maintain!

Committee Snapshot: Communications

■ Resident Outreach

- Ensure accurate/consistent information is readily available to all Residents
- Begin organizing historical details of various major projects for easy access

■ Community Property Management (CPM)

- Address: <https://portal.cpmgateway.com/Home/Login>
- Official DLPOA documents (covenants, restrictions, financials, minutes, etc)
- Also allows for payments to DLPOA (annual fees, etc)

■ DLPOA Website

- Address: <http://www.dunlaplake.org/wordpress/>
- Has worked great in the past
- The new "Resident Outreach" is driving us toward a new format

■ DLPOA Facebook Pages

- Official: Search "Dunlap Lake Association"
- Unofficial: Search "Dunlap Lake Friends & Family"

Committee Goal: Maximize Access To DLPOA Information!

Committee Snapshot: Dam Maintenance

■ Major Components

- **Silo:** Underwater vertical shaft that regulates the normal pool water level.
 - When water levels rise, the water goes down the silo and passes through the dam via a concrete tunnel to maintain normal depth. The wheel that opens the gate is located above the silo.
- **Gate:** A door on the side of the silo which can be opened to lower the lake.
- **Spillway:** The secondary means of allowing overflow water to exit the lake.
 - The spillway's elevation is about one foot above the silo. When water rises quickly and the silo can't keep up, then the water flows through the spillway.
- Dam Inspection Docs: CPM Website - Documents - Other Documents / Info

■ Recent & Current Topics

- 2017: Spillway patchwork last year
- 2018: Developing plan to address future spillway limitations. Working with:
 - Illinois Department of Natural Resources
 - Army Corps of Engineers
 - Hurst Rosche (engineering firm)
- Future: Need to provision for maintenance of other components

Committee Snapshot: Safety

■ Use Of Lake (Boating, Swimming, etc)

- Boating Rules and Regulations
 - The Association follows state and federal boating regulations.
 - All watercraft must have a Dunlap permit sticker
 - Running and anchor lights required at dusk
- Limit of 3 motorized boats holding more than 2 people
 - 1 may be a pontoon <24ft with a 9.9 hp limit
 - All others <20ft with 7.5 hp limit
- Limit of 6 individual water crafts (wind, paddle, or manual)
- *Lake use details are covered in the Covenants & Restrictions, Article 12, Section 5 found on CPM Portal under Documents - Governing Documents*

■ Water Quality

- Water is tested annually
- Algae is normal but cleaner lakes = less algae blooms
 - Control silt erosion on property and into lake
 - Limit yard chemicals from 20 feet to waters edge

Committee Snapshot: Silt & Erosion, 1 Of 2



■ Silt Committee

- 2005 Report: Based on prior work with Cochran & Wilkins
 - Watershed study (2600 acres, 75% Mooney Creek, development mapping)
 - Lake bottom survey
 - Recommendations: remove material, build materials collection basin, silt fences
- 2011 Committee: Current proposals and research
 - Established water quality as goal for committee
 - After competition, hired Horner-Shifrin as engineer to consult on strategy
 - Consulted with Army Corp, Madison County, City of Edwardsville and contractors
 - Updated consultation confirmed 2005 data (watershed, lake depth, development)
- Recommended Strategy
 - Stabilize shorelines (accomplished but always ongoing)
 - Remove material from lake
 - Construct material retention/collection basin
- Happy To Discuss Details Of Due Diligence And Previous Proposals!

Committee Goal: Maintain Water Quality Throughout The Lake!

Committee Snapshot: Silt & Erosion, 2 Of 2

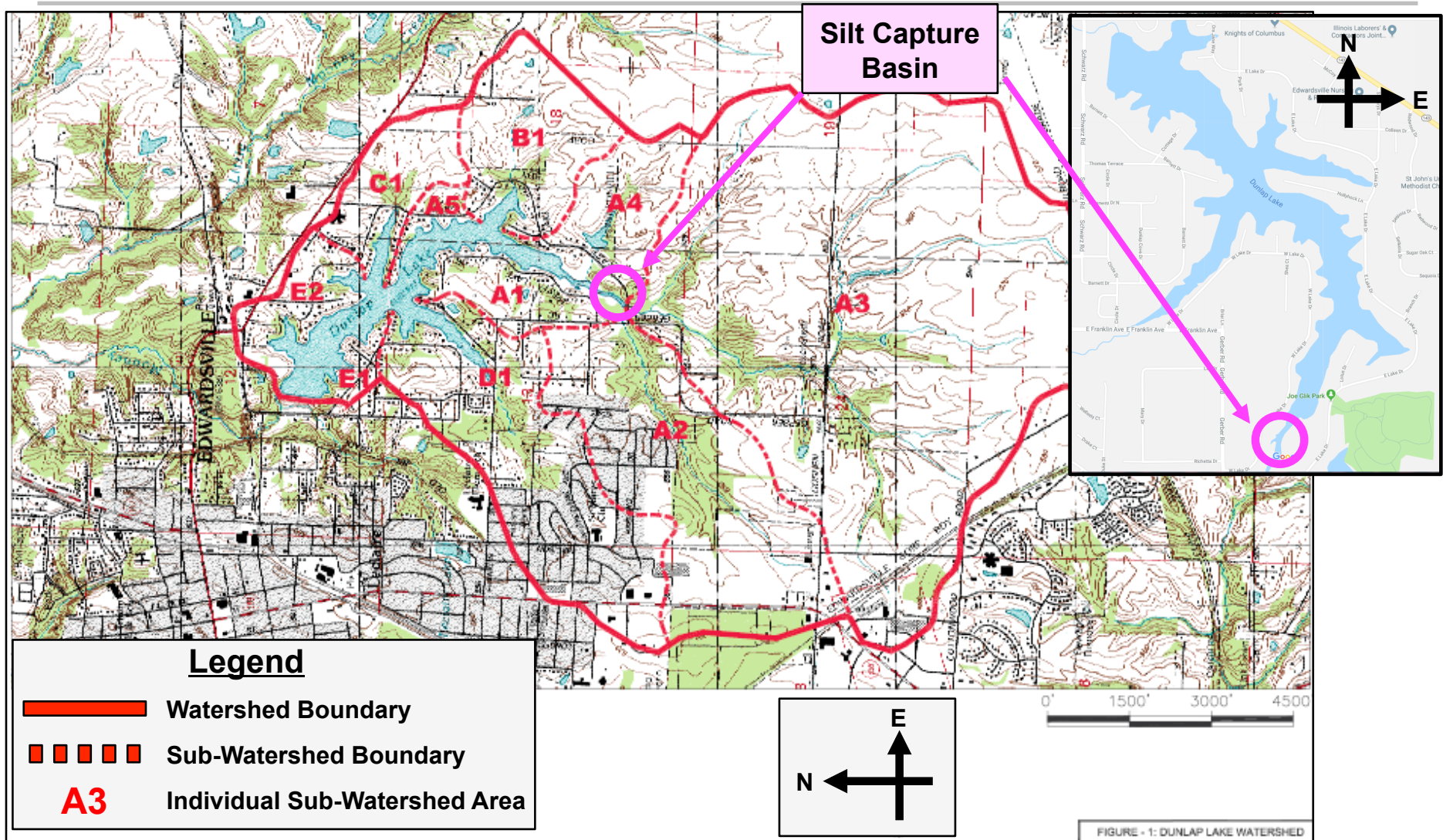


■ Lake Status

- 2600 acres from 8 watershed segments: largest comprises ~75% of flow
- Water quality currently compromised
 - **Algae/Plant Growth:** Water depth contributes to suspended particles due to wave action...which feeds algae and aquatic plant growth
 - **Influx Of Chemicals/Nutrients:** Phosphorous/Nitrogen/Etc attached to silt contributes to suspended material...which feeds algae and aquatic plant growth
- Lake depth status
 - 2005: 471,000 cubic yards (cy) of silt in lake (capacity reduced by 21%)
 - 2015: Horner-Shifrin report on selected areas from last 10 years
 - Cove A saw 20% increase: Started with 80,000cy in 2005, added 16,000cy by 2015
 - Cove B saw 37% increase: Started with 12,000cy in 2005, added 4,500cy by 2015
- **Current Capture Area Is Full:** Has little/no impact on material flowing in
 - Material is carried further into the lake before "settling out"
- Happy To Answer Questions About Currently Proposed Plan!

Committee Goal: Maintain Water Quality Throughout The Lake!

Watershed Overview



Committee Goal: Maintain Water Quality Throughout The Lake!

An aerial photograph of Dunlap Lake during sunset. The sun is low on the horizon, casting a warm orange and yellow glow across the sky and reflecting on the water. The lake is surrounded by dense green trees and some residential areas with houses and lawns visible along the shoreline. A few small boats are visible on the water.

**WELCOME TO
DUNLAP LAKE!!!**